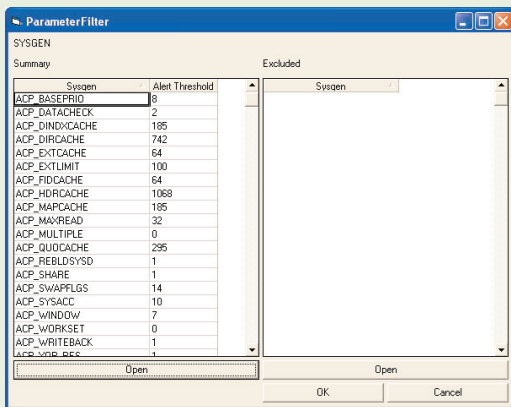
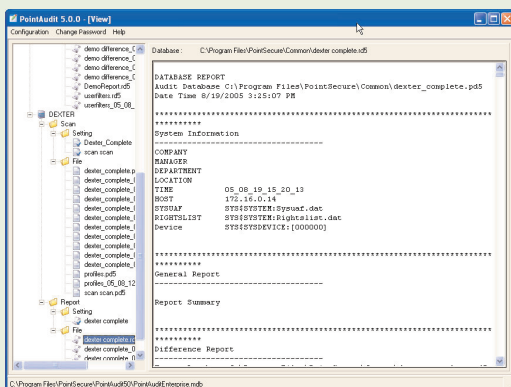


View overall state of system health.



Set baseline criteria inline with corporate policies.



Create a variety of custom reports.

overview

PointAudit is a non-intrusive PC-based tool that allows users to quickly and easily assess the security of their OpenVMS environment. By auditing file security, system settings and user profiles as well as comparing data over time, PointAudit enables users to determine if their OpenVMS security settings are in compliance with defined OpenVMS security policies or industry best practices.

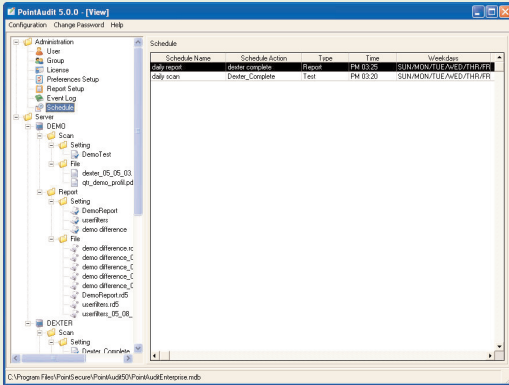
why PointAudit?

PointAudit provides flexibility, simplification and automation to OpenVMS security administration. Given the number of files, images, processes and users in a typical OpenVMS environment, a desirable level of security is difficult to sustain without automation. PointAudit allows administrators to protect OpenVMS systems using industry best practices endorsed by HP OpenVMS Engineering all while saving time and resources.

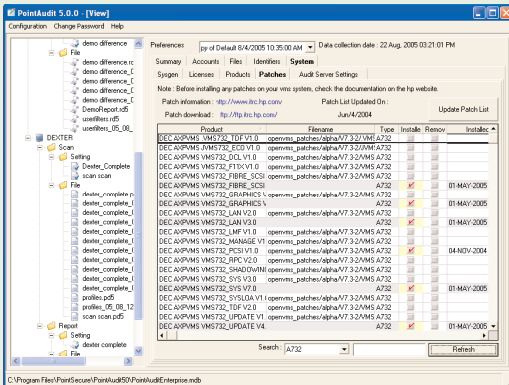
Frequently examining or “auditing” OpenVMS systems is the most obvious, proactive action that a company can take to effectively minimize their risk of experiencing a security breach. However, keeping up with the latest configuration best practices is a complex and time consuming task. PointSecure is a certified HP Partner and works closely with HP OpenVMS Engineering to constantly update the PointAudit tool to reflect industry standard best practices.

key benefits

- Quickly and easily identify exposures and weaknesses on OpenVMS systems
- Save time and System Administrator resources
- Reduce exposure to risk
- Enable non-OpenVMS experts to effectively perform OpenVMS audits
- Provides out-of-the-box recommendations for resolving issues
- Extensive and flexible reporting capabilities with detailed information
- Identify resources that are out of compliance with established company policies and/or industry best practices
- Establish baseline security standards for continuous monitoring
- Promotes regulatory compliance for security mandates such as HIPAA and GLBA
- Establish roles and privileges
- Schedule tasks
- Monitor changes between databases
- Monitor deviations from security baseline



Schedule security checks and reports to run at regular intervals.



Compare available patches to what has been installed on the system.

technical features

- Connect to host OpenVMS systems from a PC and run checks on 3 different areas of security (accounts, files and system settings)
- Compare values found on the system to a predefined (and customizable) security policy based on HP-recommended best industry practices
- Compare data from different points in time and pinpoint differences
- Drill down into individual security checks to access detailed information about user profiles, accounts, owners, user privileges, flags, system settings, file settings, etc. in a spreadsheet-type view
- Review and make mass changes to Unique Identification Code (UIC) groups from the PC console
- List all privileges on the system as well as the number of users that hold each privilege
- Modify user account privileges and set threshold values of the number of accounts that should hold each privilege
- Identify vulnerabilities on the system and report on the accounts, files and system settings that have these exposures or weaknesses
- Correct exposures by examining detailed privileges and modifying the account as needed
- List all SYSGEN parameters related to network and log-in settings as well as compare these to security best practices on a pass/fail basis
- List licenses and patches installed on the system
- Patch analysis feature compares the patch inventory to an up-to-date list of patches available for download from HP
- Generate 35+ predefined reports or use the customized reporting capabilities on 115+ different parameters in 5 functional areas that can be displayed to the screen or output to text
- Assign roles
- Schedule tasks
- Centralize / aggregate files

contacts

PointSecure Corporate Headquarters

802 Lovett Boulevard
Houston, TX USA 77006

Phone: 713-868-1222

Fax: 713-862-5210

www.pointsecure.com

Sales Information: sales@pointsecure.com

General Information: info@pointsecure.com

system requirements

Operating Requirements:

- Intel Pentium 100-MHz processor or equivalent
- 32MB RAM recommended minimum; more memory improves performance
- 25MB drive space
- Internet Explorer 5.0 or higher
- Windows NT/XP/2000/2003
- VGA or higher resolution monitor (800 x 600), recommended (1024 x 768)
- Microsoft Data Access Components (MDAC) v 2.5 or higher